

CUADRO DE ZAPATAS					
N. ZAPATA	TIPO	LADO A	LADO B	CANTO H	ARR. LADO A ARR. LADO B
1	C	220	200	50	15 R 12 15 R 12
2	C	200	200	50	14 R 12 14 R 12
3	C	180	180	50	10 R 12 10 R 12
4	C	190	180	50	10 R 12 10 R 12
5-30	C	200	200	50	14 R 12 14 R 12
6	C	250	250	50	17 R 12 17 R 12
7	C	210	210	50	15 R 12 15 R 12
8	C	150	150	50	6 R 12 6 R 12
9	C	160	160	50	6 R 12 6 R 12
10-36	C	180	180	50	12 R 12 12 R 12
11	C	220	220	50	15 R 12 15 R 12
12	C	240	240	50	17 R 12 17 R 12
13	C	170	170	50	8 R 12 8 R 12
14	C	170	170	50	8 R 12 8 R 12
15-42	C	200	200	50	14 R 12 14 R 12
16	C	200	200	50	14 R 12 14 R 12
17	C	210	210	50	15 R 12 15 R 12
18	C	180	180	50	10 R 12 10 R 12
19	C	180	180	50	10 R 12 10 R 12
20-47	C	200	200	50	14 R 12 14 R 12

CUADRO DE ZAPATAS					
N. ZAPATA	TIPO	LADO A	LADO B	CANTO H	ARR. LADO A ARR. LADO B
26	C	220	220	50	15 R 12 15 R 12
27	C	170	170	50	8 R 12 8 R 12
28	C	170	170	50	8 R 12 8 R 12
29	C	220	220	50	15 R 12 15 R 12
31	C	200	200	50	14 R 12 14 R 12
32	C	150	150	50	6 R 12 6 R 12
33	C	150	150	50	6 R 12 6 R 12
34	C	200	200	50	14 R 12 14 R 12
35-36	C	200	200	50	14 R 12 14 R 12
37	C	200	200	50	14 R 12 14 R 12
38	C	150	150	50	6 R 12 6 R 12
39	C	150	150	50	6 R 12 6 R 12
40	C	200	200	50	14 R 12 14 R 12
41-50	C	200	200	50	14 R 12 14 R 12
43	C	210	210	50	15 R 12 15 R 12
44	C	160	160	50	6 R 12 6 R 12
45	C	160	160	50	6 R 12 6 R 12
46	C	200	200	50	14 R 12 14 R 12
48	C	210	210	50	15 R 12 15 R 12
49	C	170	170	50	8 R 12 8 R 12

CUADRO DE ZAPATAS					
N. ZAPATA	TIPO	LADO A	LADO B	CANTO H	ARR. LADO A ARR. LADO B
50	C	160	160	50	10 R 12 10 R 12
51	C	190	190	50	10 R 12 10 R 12
53	C	190	190	50	10 R 12 10 R 12
54	C	180	180	50	10 R 12 10 R 12
55	C	160	160	50	10 R 12 10 R 12
56	C	160	160	50	6 R 12 6 R 12
57	C	190	190	50	10 R 12 10 R 12
59	C	170	170	50	8 R 12 8 R 12
60	C	160	160	50	6 R 12 6 R 12
61	C	170	170	50	8 R 12 8 R 12
62	C	180	180	50	10 R 12 10 R 12
63	C	170	170	50	9 R 12 9 R 12

16, 17	1	6	7, 12	11	18, 19, 20 13, 14, 15 6, 9, 10 2, 3, 4, 5	22, 23, 24, 25
Dim. 35 6R12 Ed6a15	Dim. 35 6R12 Ed6a15	Dim. 35 6R12 Ed6a15	Dim. 35 6R12 Ed6a28	Dim. 35 6R12 Ed6a15	Dim. 35 6R12 Ed6a15	Dim. 35 6R12 Ed6a15
Dim. 35 6R12 Ed6a15	Dim. 35 6R12 Ed6a15	Dim. 35 6R12 Ed6a28	Dim. 35 6R12 Ed6a28	Dim. 35 6R12 Ed6a15	Dim. 35 6R12 Ed6a15	Dim. 35 6R12 Ed6a15

ZONA 1

48, 49, 50, 51 43, 44, 45, 46 37, 38, 39, 40 31, 32, 33, 34 26, 27, 28, 29	38, 35, 36, 42	41	47	60, 61, 62, 63 56, 57, 58, 59 52, 53, 54, 55	66'	64, 65'	2UPN 140	30x30	64, 65, 66, 67
Dim. 35 6R12 Ed6a15	Dim. 35 6R12 Ed6a28	Dim. 35 6R16 Ed6a28	Dim. 35 6R16 Ed6a28	Dim. 35 6R12 Ed6a15	Dim. 25	64, 65'	VER DETALLE FORMACION CAPITEL	4d16	64, 65, 66, 67
Dim. 35 6R12 Ed6a15	Dim. 35 6R12 Ed6a28	Dim. 35 6R16 Ed6a28	Dim. 35 6R16 Ed6a28	Dim. 35 6R12 Ed6a15	Dim. 25	64, 65'	VER DETALLE FORMACION CAPITEL	4d16	64, 65, 66, 67

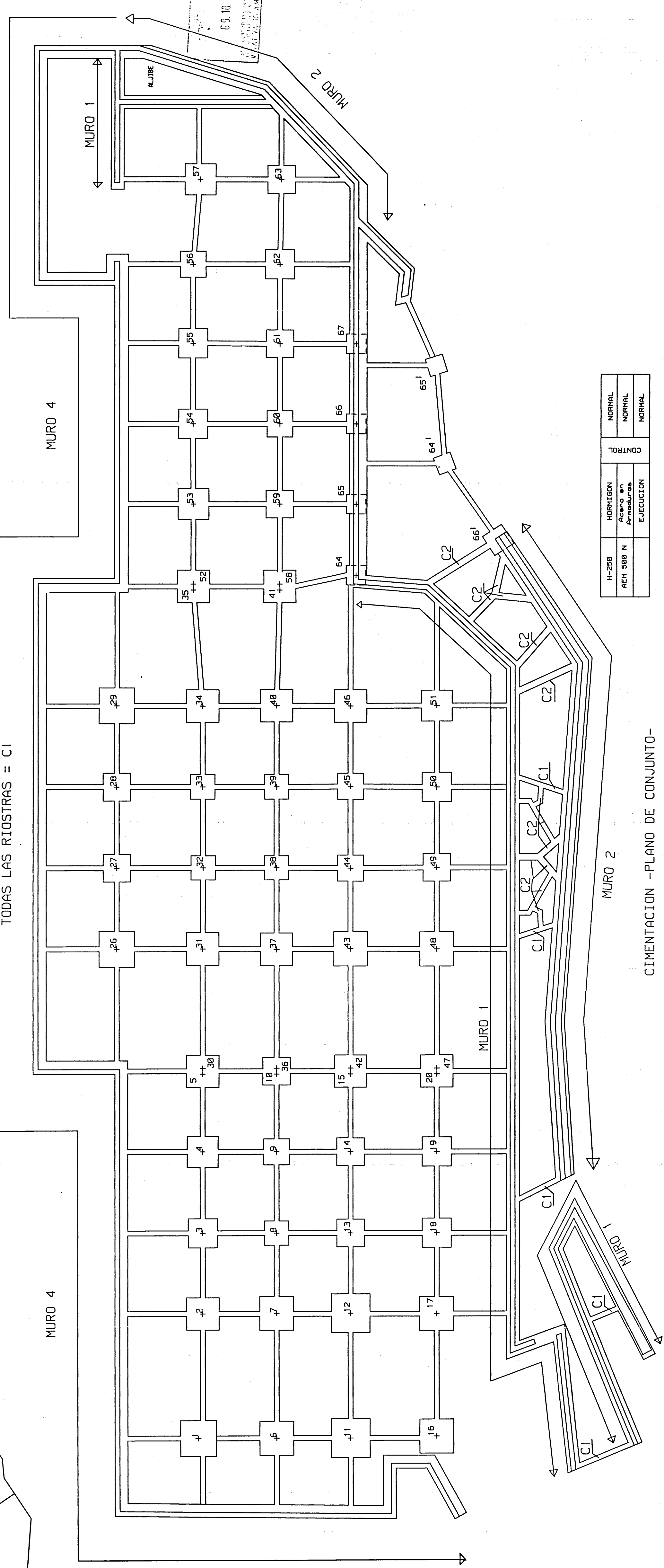
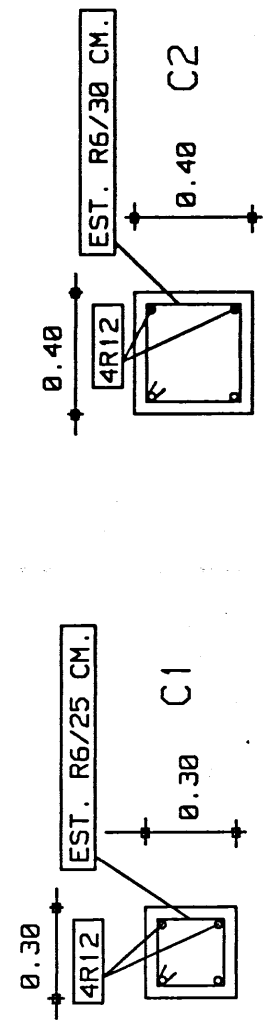
ZONA 3

ZONA 2

ZONA 1

ZONA 2

ZONA 3



H-250	NORMACION	NORMAL
AEH 500 N	PROYECTO DE EJECUCION	NORMAL
		NORMAL

CIMENTACION - PLANO DE CONJUNTO -  
ESCALA 1/150